



INSPECTION REPORT
Pre-Shipment Inspection
(SAMPLE REPORT)

Report No: M-12345

INSPECTION INFORMATION

Client	ABCDE		
Supplier	ABCDE		
Factory	ABCDE		
Inspection Instruction	MSTP-M-004-M7		
P.O. No.	123456, 123456	P.O. Quantity	999 Pieces
Item No.	Dining Table/Chair	Sampling Plan	ISO2859: Single, Normal
Inspection Date	XXXXXX	Inspection Level	G-II
Inspection Sequence	Uploading inspection	Sample Size	100 Pieces
Inspection Location	XXXXXX	AQL	Critical: 0, Major:2.5, Minor:4.0
Product Description	Dinning Table		



INSPECTION RESULT SUMMARY

Category	Conform	Not Conform	Pending
1.Quantity	X		
2.Workmanship	X		
3.Style, Color & Documentation	X		
4.Field Test & Measurement			X
5.Shipping Mark & Packaging	X		
OVERALL CONCLUSION	PENDING for client's evaluation		

Approved by M7TP Supervisor:	XXXXX
-------------------------------------	--------------

This report reflects the facts as recorded by M7TP at the time and place of inspection. It does not relieve the manufacturers from their contractual obligations nor prejudice client's right for compensation for any apparent and/or hidden defects not detected during our random inspection or occurring thereafter.

SPECIAL ATTENTION POINT (SAP)

1	Quantity	NIL
2	Workmanship	NIL
3	Style, Color & Documentation	NIL
4	Field Test & Measurement	
4.1	The factory did not allow us to conduct breakage tempered glass test and carton drop test.	
5	Shipping Mark & Packaging	NIL

INSPECTION DETAILS

1. Quantity					Conform			
P.O. No.	Item No.	P.O. Qty	Shipment Qty		Packed Qty		Sample Size	
		(Piece)	(Piece)	(Carton)	(Piece)	(Carton)	(Piece)	(Carton)
374207	Dining Table	115	115	230	115	230	11	22
374208	Dining Chair	690	690	345	690	345	69	35
Total		805	805	575	805	575	80	57

2. Workmanship		Conform		
Defects Description		Critical	Major	Minor
Item#: Dining Table Sample size: 11 pieces				
Broken at leg(0.6cm)			1	
Convex mark at leg(0.3~0.5cm)				2
Item#: Dining Chair Sample size: 69 pieces				
Rusty mark at hole(1cm)			1	
Scratched mark at leg(0.5~1.5cm)				2
Total Found:		0	2	4
Allowed:		0	5	7
Sample Size:		80	80	80

Defect Photos



Dining Table Defect-Broken at leg(0.6cm)-ma



Dining Table Defect-Convex mark at leg(0.5cm)-mi



Dining Table Defect-Convex mark at leg(0.3cm)-mi



Dining Chair Defect-Rusty mark at hole(1cm)-ma



Dining Chair Defect-Scratched mark at leg(0.5cm)-mi



Dining Chair Defect-Scratched mark at leg(1.5cm)-mi

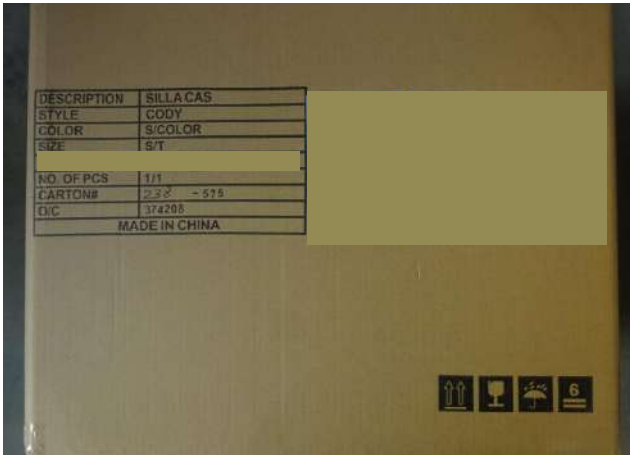
3. Style, Color & Documentation				Conform		
DESCRIPTION				Conform	Not Conform	Pending
The inspected samples were consistent with				-	-	-
Purchase Order				X		
Product Specification				X		
Instruction manual and Document Verification				-	-	-
Instruction manual in English.						

4. Field Test & Measurement				Pending		
Item		Specification	Sample Size	Conform	Not Conform	Pending
4.1	Product dimension check	-	3 Sample/item	X		
4.2	Product weight check	-	3 Sample/item	X		
4.3	Barcode scanning test	-	3 Sample/item	X		
4.4	Smell check	-	3 Sample/item	X		
4.5	Rub and tape test for Painting	-	3 Sample/item	X		
4.6	Assembly check	-	3 Sample/item	X		
4.7	Loading test	-	3 Sample/item	X		
4.8	Stability check	-	3 Sample/item	X		
4.9	Breakage tempered glass test	-	1 Sample			X
4.10	Carton dimension check	-	1 Carton/Item	X		
4.11	Carton weight check	-	1 Carton/Item	X		
4.12	Quantity per carton check	-	2 Cartons/Item	X		
4.13	Carton drop test	-	1 Carton			X

Checking Item	Specification	Result
Item#: Dining Table		
Carton dimension (cm)	-	Glass: 153.3x92.8x3 Leg: 122.5x66x8.3
Carton weight (kg)	-	Glass: 27.76 Leg: 7.86
Product weight (kg)	-	32.38, 32.64, 32.50
Product size (mm)	1500x900x760	1497x898x748, 1497x898x745, 1497x898x747
Glass thickness (mm)	-	8, 8, 8
Item#: Dining Chair		
Carton dimension (cm)	-	61.5x48x56.5
Carton weight (kg)	-	9.68
Product weight (kg)	-	3.94, 3.90, 3.94
Product size (cm)	Depth x Width x Height x Seat H	52.5x44.5x84x45, 52.7x44.5x84.5x45 52.5x44.8x84.3x45.3

5. Shipping Mark & Packaging	Conform
---	----------------

5.1 Shipping mark photos



5.2 Packaging photos



Remark: Only item number Dining Chair is listed here for your reference. For other items please refer to photos attached.

Packaging Description:

- 1 piece of product was packed into a polybag.
- 2 pieces of products were packed into a 5-ply corrugated export carton.
- Export carton was sealed with gummed tape.

6. Reference Note

6.1	The weight of carton was measured by the apparatus without calibration which was provided by the factory. Our inspector required the factory to calibrate the apparatus regularly.
6.2	The inspected cartons were not sealed because the factory did not repack them immediately after inspection.
6.3	Manufacturer did not allow us to draw any production sample for reference.
6.4	Our inspector required the factory to repair all defective samples before shipment.
6.5	Draft report has been provided to the factory and defective points have been explained as well.

7. Photos



Warehouse



Warehouse



Stability check



Stability check



Rub check



Thickness check



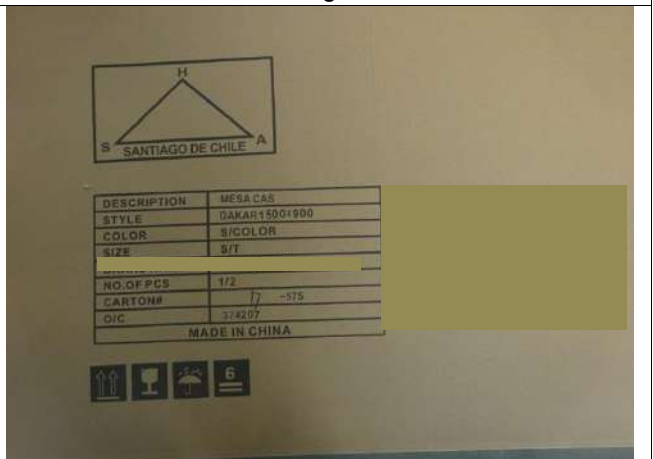
Loading test



Loading test



Dining Table



Dining Table



Dining Table



Dining Table



Dining Table



Dining Table



Dining Table



Dining Table



Dining Table



Dining Table



Dining Table



Dining Table



Dining Table



Dining Table



Dining Table



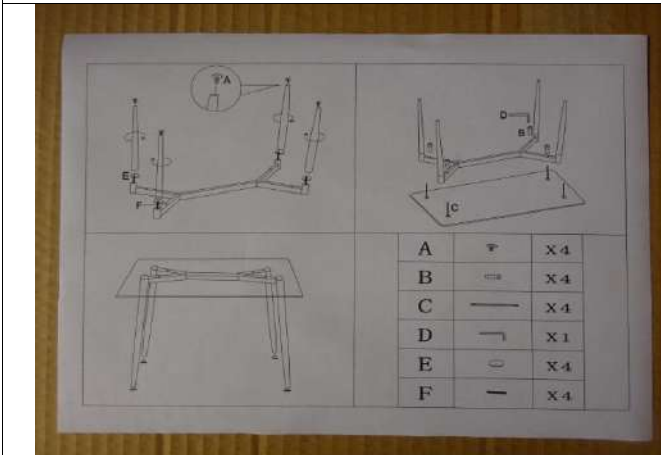
Dining Table



Dining Table



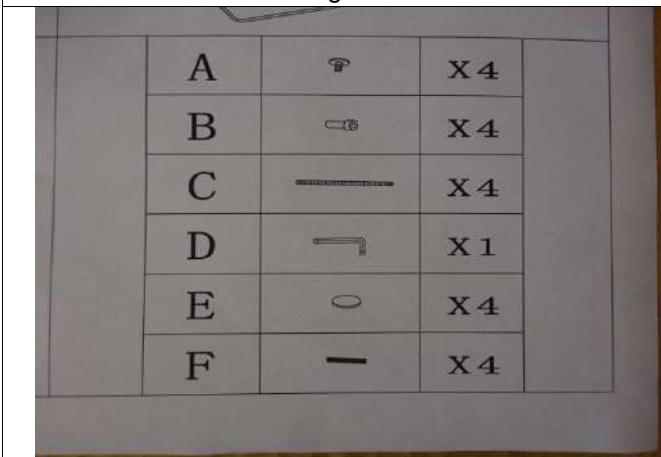
Dining Table



Dining Table



Dining Table



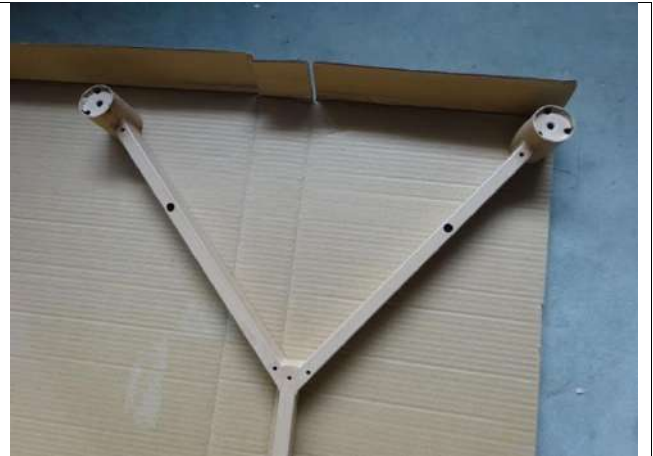
Dining Table



Dining Table



Dining Table



Dining Table



Dining Table



Dining Table



Dining Table



Dining Table



Dining Table



Dining Table



Dining Table



Dining Table



Dining Table



Dining Table



Dining Chair



Dining Chair



Dining Chair



Dining Chair



Dining Chair



Dining Chair



Dining Chair



Dining Chair



Dining Chair



Dining Chair



Dining Chair



Dining Chair



Dining Chair



Dining Chair



Dining Chair



Dining Chair



Dining Chair



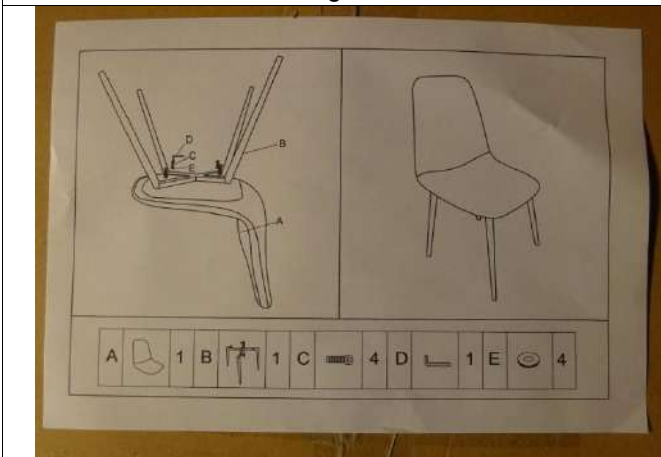
Dining Chair



Dining Chair



Dining Chair



Dining Chair



Dining Chair



Dining Chair



Dining Chair



Dining Chair



Dining Chair



Dining Chair



Dining Chair



Dining Chair



Dining Chair



Product view



Product view



Product view



Product view



Product view



Product view

Inspector:	ADAM	Auditor:	ADAM
-------------------	------	-----------------	------

End of Report